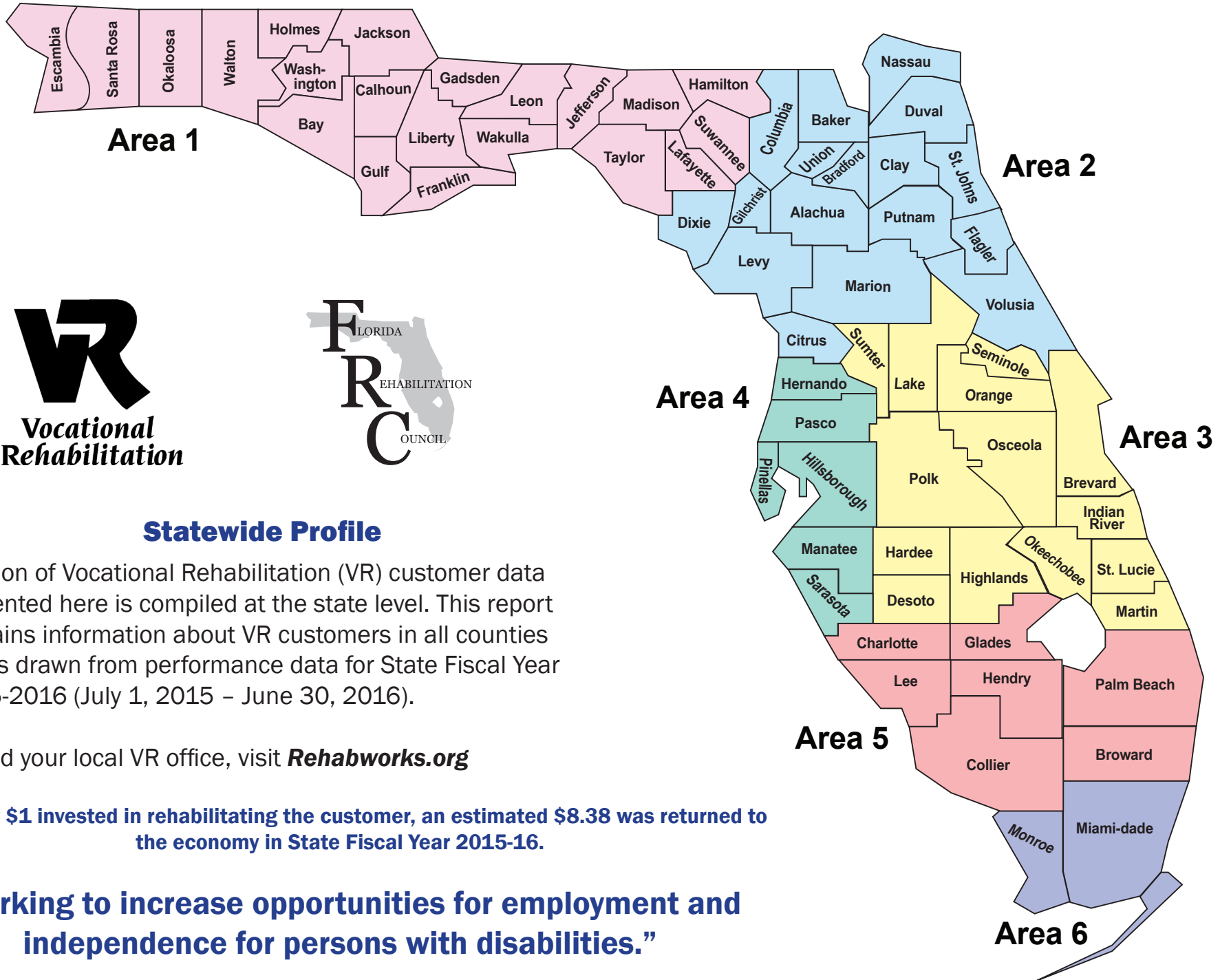


Florida Department of Education Division of Vocational Rehabilitation



Statewide Profile

Division of Vocational Rehabilitation (VR) customer data presented here is compiled at the state level. This report contains information about VR customers in all counties and is drawn from performance data for State Fiscal Year 2015-2016 (July 1, 2015 – June 30, 2016).

To find your local VR office, visit Rehabworks.org

For every \$1 invested in rehabilitating the customer, an estimated \$8.38 was returned to the economy in State Fiscal Year 2015-16.

“Working to increase opportunities for employment and independence for persons with disabilities.”

The State of Florida (Data represents all counties in the state)	
State Population	
Number of counties	67
Total state population per 2010 Census	18,801,310
Population age 16 and over per 2010 Census	15283266
Estimated rate of employment for Floridians age 16 and over with a disability per 2015 American Community Survey	17.9%
Estimated rate of employment for Floridians age 16 and over without a disability per 2015 American Community Survey	60.7%
Vocational Rehabilitation Counselors	
Number of Vocational Rehabilitation counselors carrying a caseload at the beginning of State Fiscal Year 2015-16	479
Customers in Vocational Rehabilitation	
Average number of active Vocational Rehabilitation customers per month	42,098
Total number of customers applying for Vocational Rehabilitation services	25,316
Employment	
Total number of Vocational Rehabilitation customers gainfully employed during State Fiscal Year 2015-16	5,194
<i>Approximate time for customer to complete vocational rehabilitation and become employed is 31 months</i>	
Earnings for Customers Employed	
Projected annual earnings for customers achieving gainful employment	\$17,189
Average hourly wage for customers achieving gainful employment	\$11.44
Cost of Services	
Approximate General Revenue for direct cost of services for VR customers in all counties (21.3%)	\$19,529,333
Approximate Federal "match" for direct cost of services for VR customers in all counties (78.7%)	\$72,157,676
Return on Investment (ROI) for Gainfully Employed Customers	
Estimated total income increase over work life for gainfully employed customers	\$1,388,945,861
Estimated combined federal, state, and local tax gains	\$269,455,497
Estimated amount returned to economy for every federal and state dollar invested in rehabilitating the customer (ROI)	\$8.38



For further information contact
 VR's Public Affairs Office
 at 850.245.3335

Disability Group	Gainfully Employed (%)
Chronic Medical	10.11%
Developmental Disabilities	16.77%
Learning Disabilities	9.97%
Mental Health	41.16%
Orthopedic	10.51%
Sensory	10.09%
Substance Abuse	1.39%